

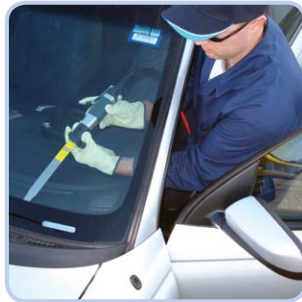
Auto Glass Removal Applications

See the tool in action at btbtools.com/videos

Many glass removals, most specifically if undamaged and to be re-installed, may require different or a combination of cut-out techniques. BTB's precise, smart and versatile air or battery powered system allows you to cut the adhesive:

- using no stress or force,
- from outside the vehicle,
- from inside of the vehicle,
- against the glass surface, or
- against the pinchweld/panel surface, avoiding contact with the encapsulation

Long flexible blades easily **REACH URETHANE BELOW DASHBOARDS** including double beads and difficult adhesives on side and back glasses.



Cut from outside vehicle with **POWERED COLD KNIFE BLADES** for a fast cut-out without physical force to the glass or technician's limbs.



PRECISE CUTTING from INSIDE VEHICLE with BLADE DEPTH CONTROL ARMS for user confidence and protection of painted surfaces.



For **ANY CURVED GLASSES**, thin flexible blades follow the contour of the curved glass.



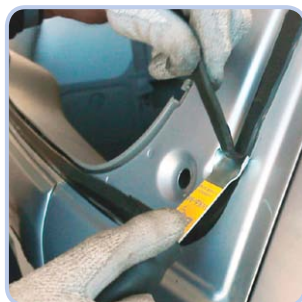
Small light-weight and versatile power tool is excellent for removing **SMALL & DIFFICULT GLASSES**.



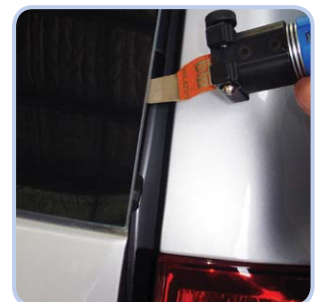
CUT AGAINST PINCHWELD from inside vehicle and underneath the moulding to save and **RE-USE EXPENSIVE ENCAPSULATED GLASSES**.



Quick and easy **ANTI-SCRATCH PINCHWELD SCRAPER** blades leave a thin even layer of adhesive for re-bonding.



CUT UNDER EDGE OF EXPOSED GLASS OR ENCAPSULATION from outside using a standard blade to cut against either the glass or body panel.



Body Shop Additional Removal Applications

See the tool in action at btbtools.com/videos

Removal of a broken front windscreen is easy. The challenges to auto body repairers are removal and re-installation of unbroken, expensive or encapsulated front, side and rear glasses, panoramic glass roofs and bonded panels. The BTB tool specialises in all applications.

Gain control of workshop job-flow times by adopting **IN-HOUSE GLASS REMOVAL.**



Powerful tool & strong blades cut tough adhesive to **REMOVE ADHESIVE BONDED PANELS** or panel sections.



Safely remove difficult and expensive quarter & hatch glasses and **PANORAMIC GLASS ROOF & FRAME ASSEMBLIES** for re-installation.



Quickly and **SAFELY REMOVE BODY MOULDS**, bump strips, badges, nameplates, decals and emblems. The blade's smooth surface slides freely against a painted panel, resulting in no damage to paint or part.



Bus, Truck, Rail & Heavy Vehicle Applications

Glass, panel and bonded component removal in large vehicles is similar but involves harder and wider beads of adhesive. BTB's robust air tool is designed for heavy duty applications.

CUT FROM OUTSIDE with PCK blades or combine inside and outside cuts for large and difficult glasses.



CUT FROM INSIDE with standard blades for **WIDE, HARD, DOUBLE or HIDDEN ADHESIVE BEADS**. No need to remove interior trims with BTB's thin smooth blades which safely reciprocate between the trim seal and glass.



See page 22 for special blades to quickly and safely **REMOVE BACKFILL ADHESIVE** between glass edges and / or panels.



REMOVE BONDED PANELS or accident damaged panel sections for repair from buses, trains and similar vehicles.

